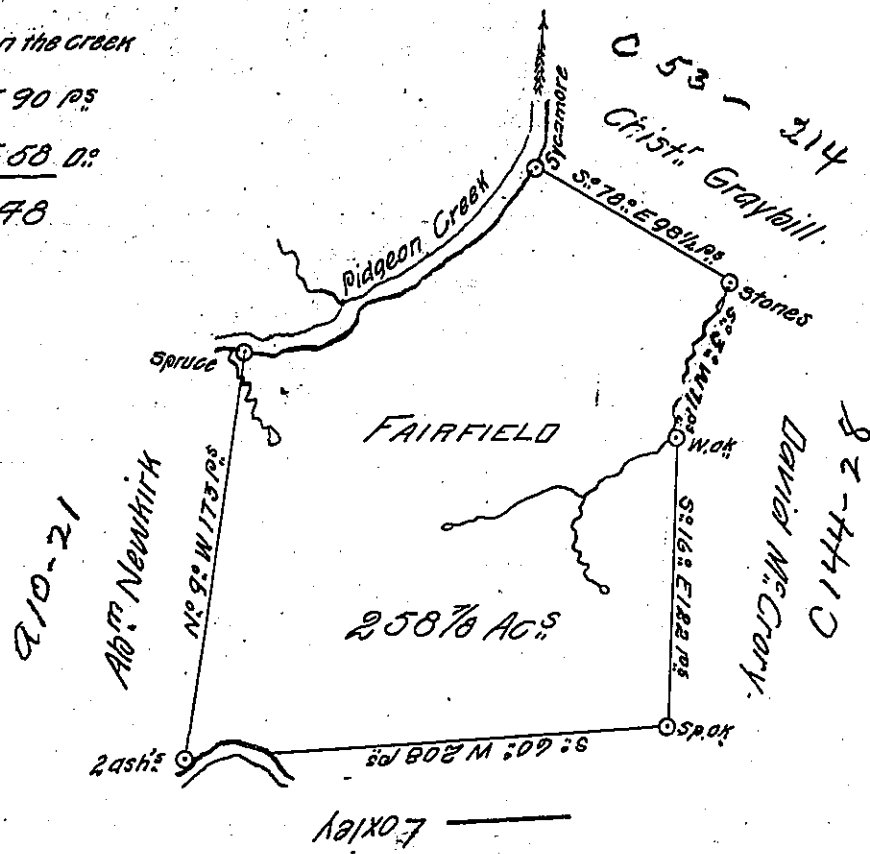


Courses & C down the creek

N: 45: E 90 ps

N: 33 E 58 D:

148



A Draught of a survey called "FAIRFIELD" situate on Pigeon Creek in Wash-
ington County containg 258 7/8 Ac. strict measure executed Feb^y 22^d 1787 in Cons-
equence of a Certift. for 400 Ac. granted to Jn^o Hull by the Commiss^{rs} appointed by
Virginia to adjust the Claims to unpatented lands in the counties Manang^o Yohg^o and Ohio
and duly and duly entered with the County Surv^{rs} ret^d 15 May - Ent^d 15 Mar-80
Jn^o Lukens Esq. J. Gen^l

Presley Nevill }
Matt^w Ritchie } D. S.

IN TESTIMONY that the above is a copy of the original remaining on file in
the Department of Internal Affairs of Pennsylvania, made
conformably to an Act of Assembly approved the 16th day of
February, 1833, I have hereunto set my Hand and caused
the Seal of said Department to be affixed at Harrisburg,
this twenty sixth day of January 1905

George P. Brown
Secretary of Internal Affairs.